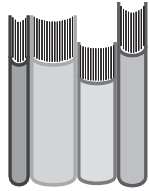


## ALWAYS NEEDED ITEMS

- Clothes for premature infants.
- Sweatshirts. (Adult sizes, too – for teenagers.)
- T-shirts. (All sizes.)
- Books.
- New toys and games.
- New stuffed toys under 18" tall.  
(Sorry, we cannot accept vending machine toys.)
- Greeting cards created by children.  
(Please do not include full names, addresses or pen pal requests.)
- Wrist rattles.
- Music gift certificates.
- Posters.
- Batteries.
- Radio and tape player head phones.
- Bead sets for making jewelry and other crafts.
- Craft sets.
- Playing cards.



## RELIGIOUS THEMES

Patients come from many different religious and cultural backgrounds. Please call Pastoral Care at (414) 266-2800 for guidelines regarding religious themed donations.

Thank you for your interest in creating projects for kids. We hope your group decides to do one of the suggested projects in this brochure. In addition, we always welcome new ideas.



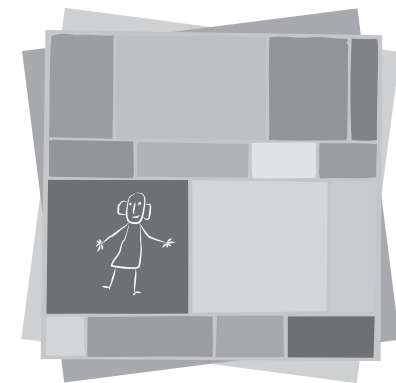
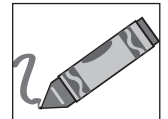
We would be happy to greet you in the lobby to accept your donations at a pre-arranged time. We are most appreciative of your support.

For further information, questions or suggestions, please contact the Kohl's Child Life program at (414) 266-3588.

Children's Hospital of Wisconsin  
PO Box 1997  
Milwaukee, WI 53201  
(414) 266-2000  
[www.chw.org](http://www.chw.org)

© 2004 Children's Hospital and Health System  
All rights reserved.  
1/04

*Create  
-a-  
project*



*And make a child's hospital  
stay more pleasant.*

Thank you for your interest in creating a project for the patients at Children's Hospital of Wisconsin. To protect the health and privacy of patients and their families, we are unable to allow groups to distribute gifts directly to patients.

Below are some suggestions on how you can help make a hospital stay more pleasant for a child. Most of the projects listed are for children of all ages. They may fill a one-time need or they may support an on-going project.

## **PACKAGES**

### **Project kits**

Project kits are collections of children's activities that can be used in playrooms, clinics and waiting areas. Items for the kits would include play dough, crayons, activity and coloring books, word search books, bubbles, playing cards, notepads, pencils and markers.



### **Craft in a bag**

Put together a children's craft project with enough individually packaged supplies for 20 children. Each bag should contain all new materials and directions. (Glue and scissors will be provided by the hospital.)

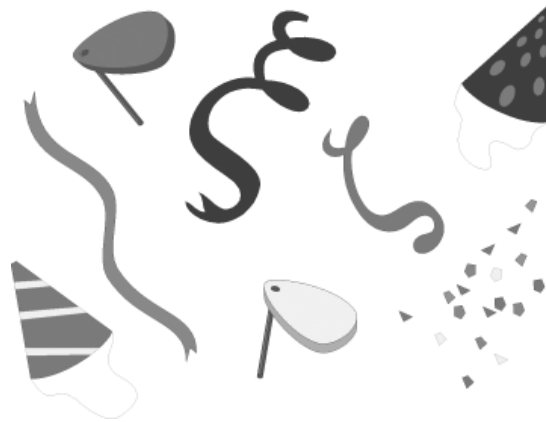
Please include a sample of the completed item.



## **Party package**

Birthdays and going-home parties for long-term patients always are a reason to celebrate!

Please include party decorations such as: crepe paper, wrapping paper, ribbon, wall decorations, banners, party hats and favors. (No small pieces.)

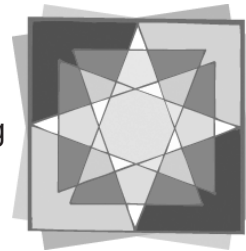


***No latex balloons, candles or food, please.***

## **Seasonal package**

Provide ready-to-hang decorations for seasonal holidays to be used in specific clinics and waiting areas or in playrooms.

Make a banner, cut-out, hanging or door decorations/posters.



## **GIFT ITEMS OR PRIZES**

- Sew children's quilts for patients.
- Create lullaby tapes for babies or soft music for children.
- Create sibling "goody" bags with crayons, paper, pencils, activity books, stickers, etc.
- Record a book on tape.
- Collect new magazines, games, crafts and audio tapes specifically for teens.
- Donate plain baseball or painters' caps and fabric paints for patients to decorate.
- Knit baby booties and caps.



## **BINGO**

Prizes for bingo always are needed. Caregivers play twice a month with children ranging from 4 to 18 years old. Prizes must be brand new and should appeal to all ages. No prize should cost more than \$5.

Examples of prizes children enjoy include: small puzzles, Go-Fish or other card games, Matchbox® cars, activity books, school supplies, hair accessories and new, small stuffed animals.

